

DESCRIPTION

Small scaled 12 volt power supplied lavatory water conservation recycling system for flushing toilets.

SPECIFICATIONS

Water conservation system, which uses recaptured lavatory sink water for flushing gravity-fed tank toilet, with the following features:

AQUS[®]

- Collection Tank Reservoir holds maximum of 5½ gallons of water and measures 15½" x 15½" x 8¾"
- Tablet Dispenser with removable cap
- Submersible, 12 VDC Power Supplied Centrifugal Pump for European applications
- Filter Screen with removable cap
- ½" Polyethylene Tube and wire
- Waste Connection Parts include waste ell and socket connections, 1½" slip joint washers and 1½" slip joint nuts
- Collection Tank To Toilet Tank Connection hardware provided
- Patented Components
- System Weight: 13 lbs.

FEATURES

Savings

In a typical residential bathroom serving two people, the AQUUS[®] collects and reuses about **9-14 gallons of water daily** for an annual average water savings of about 5,000 gallons. An equal savings in waste water discharge is also realized from the system.

Water Treatment

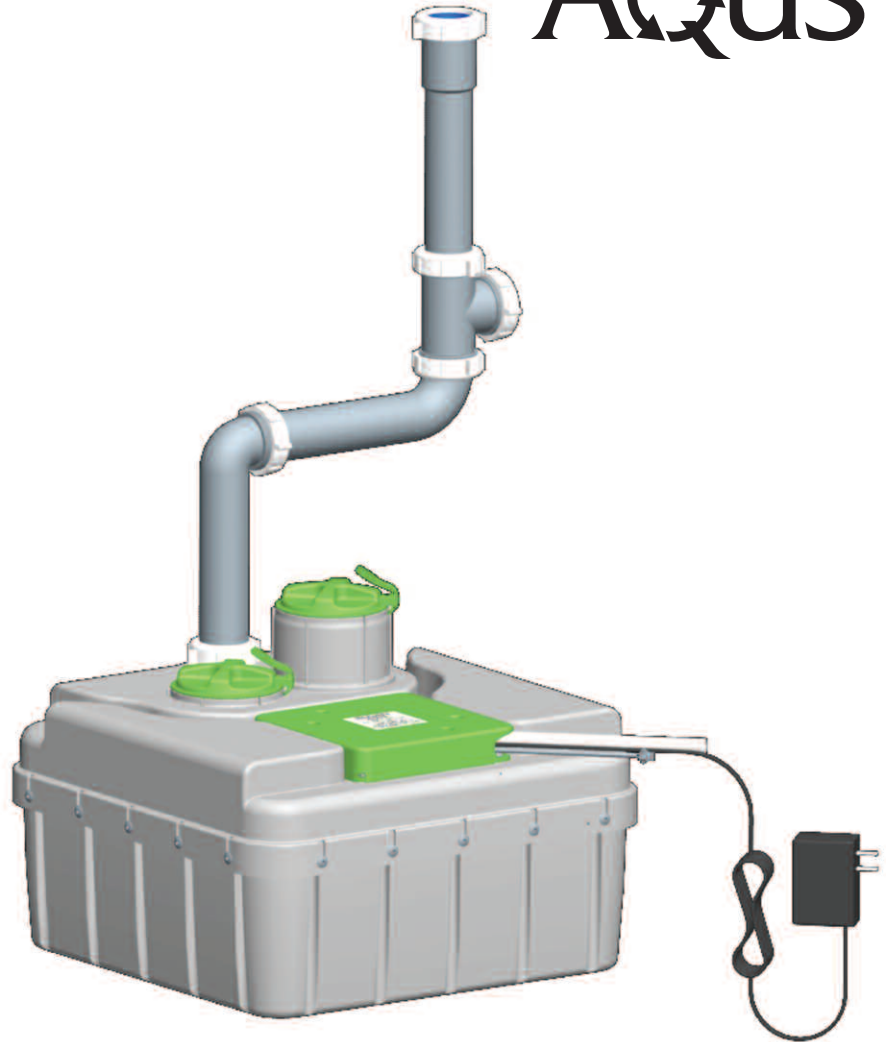
Disinfectant tablets control bacteria and other contaminants. A filter screen keeps hair and other debris from entering the toilet. Reused and treated water in the toilet is not harmful to people or pets.

Easy Maintenance

Recommended annual maintenance: Replace disinfectant tablets and clear debris from filter screen.

Warranty

1 year (limited)



| | |
|--|----------------|
| This space for Architect/Engineer approval | |
| Job Name _____ | Date _____ |
| Model Specified _____ | Quantity _____ |
| Variations Specified _____ | |
| Customer/Wholesaler _____ | |
| Contractor _____ | |
| Architect _____ | |

Sloan Valve Company
 10500 Seymour Avenue
 Franklin Park, IL 60131
 Phone: 1-800-9-VALVE-9 or 1-847-671-4300
 Fax: 1-800-447-8329 or 1-847-671-4380
 www.sloanvalve.com

Copyright © 2010 Sloan Valve Company
 Rev. 1 (09/10)

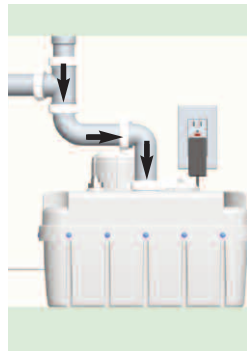
DESCRIPTION

Small scaled 12 volt power supplied lavatory water conservation recycling system for flushing toilets.

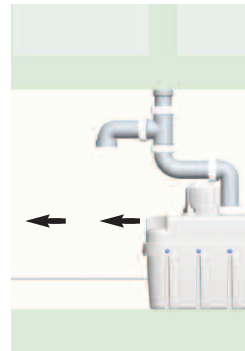
ELECTRICAL SPECIFICATIONS

- Submersible, 12 VDC Power Supply Centrifugal Pump for European applications
- Requires installation of 110-240 volt electrical outlet inside the vanity cabinet

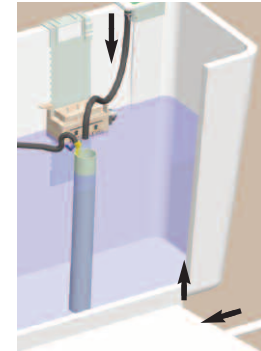
OPERATION



1. Water flowing down lavatory drain is cleaned, filtered and stored in reservoir in lavatory vanity.

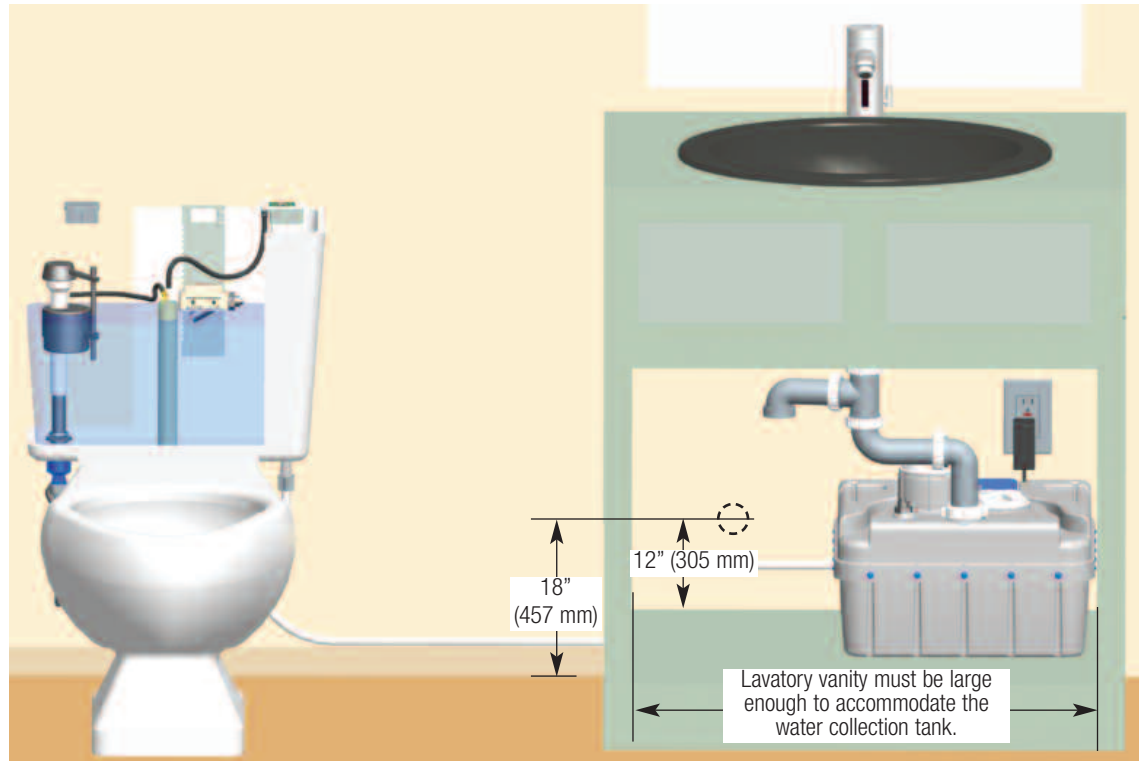


2. A 12 VDC powered centrifugal pump pushes water through pipes



3. The AQUS supplies treated recycled water to the fill supply behind the toilet tank and into the toilet tank when flushed.

DIMENSIONS/ROUGH-IN



NOTE: PVC piping in view included. Additional piping must be supplied by others.