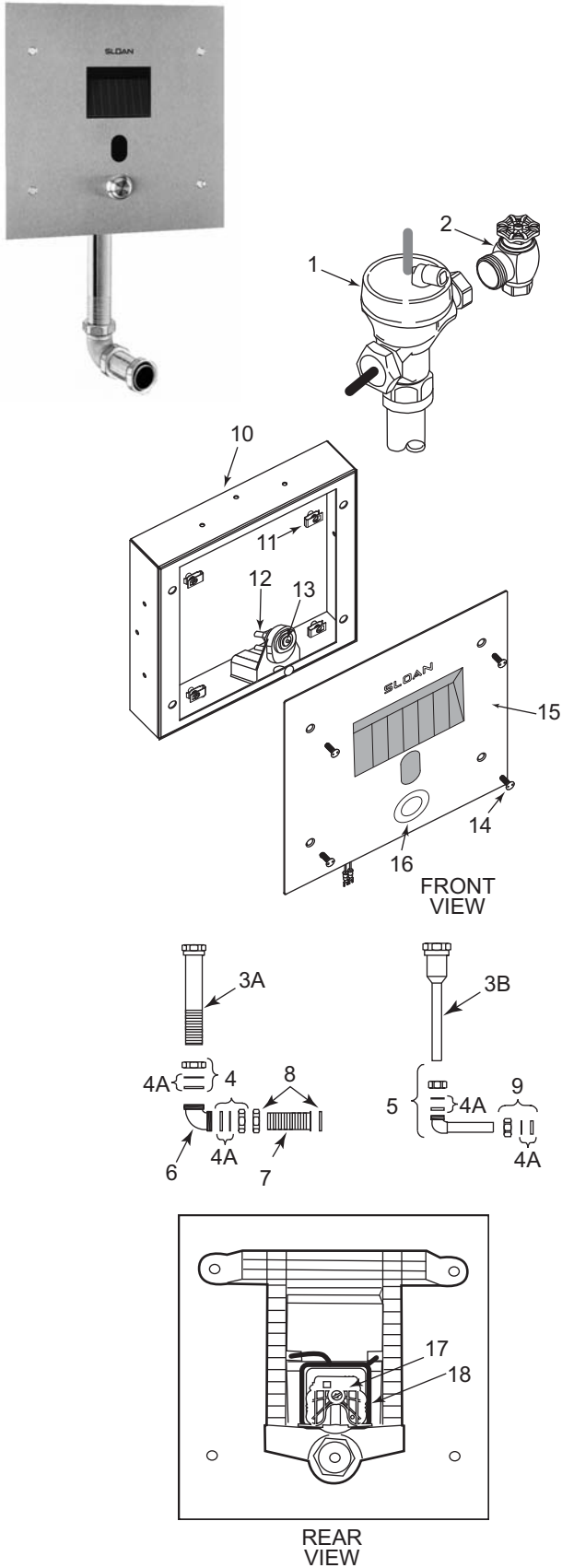


# Sloan SOLIS® Concealed Flushometers

Sensor Flushometers



## PARTS LIST

Item No.	Code No.	Part No.	Description
1.	‡		Valve Body
2.	‡	H-730-A	Bak-Chek® Control Stop
3A.	<b>0323188</b>	V-500-AA	1-1/2" (38 mm) x 11-1/2" (292 mm) Vacuum Breaker Assembly RB (Model 152 ES-S)
3B.	—	V-500-AA	3/4" (19 mm) x 10-1/2" (267 mm) Vacuum Breaker Assembly RB (Model 195 ES-S)
4.	<b>0306619</b>	F-2-AA	1-1/2" (38 mm) Slip Joint Coupling RB (Set of Two)
4A.	<b>SEE SLIP JOINT GASKETS AND RINGS TABLE BELOW</b>		
5.	‡	F-15-A	ELL with 3/4" (19 mm) Tail RB (Models 195 ES-S, 197 ES-S)
6.	<b>0206146PK</b>	F-21	1-1/2" (38 mm) Double Slip Elbow
7.	‡	F-100	1-1/2" (38 mm) Outlet Tube RB
8.	<b>0306091</b>	F-2-A	1-1/2" (38 mm) Coupling with S-21 Gasket
9.	<b>0306054</b>	F-2-AW	3/4" (19 mm) Slip Joint Coupling RB
10.	‡	—	Frame
11.	‡	—	U-Type Nuts (4)
12.	‡	—	Hydraulic Operator Assembly
13.	‡	—	Override Mount Assembly
14.	‡	—	Tamper Resistant Screws (4)
15.	‡	—	Wall Plate Assembly
16.	‡	—	Override Button Assembly
17.	‡	—	Sensor Assembly
18.	‡	—	Sensor Retainer

‡ Part number varies with valve model variation; consult factory.

## ITEM 4A. SLIP JOINT GASKETS AND RINGS

Size	Code No.	Part No.	Description
1-1/2"	<b>5306058</b>	F-3	Red Friction Ring
	<b>5322001</b>	VBF-5	Black Slip Joint Gasket
	<b>0319086/5319086</b>	S-30	Flexible Seat
	<b>0319079</b>	S-21	Rigid Seat (rubber over brass)
1-1/2" x 1-1/4"	<b>0396062</b>	F-105	Slip Joint Gasket – Rigid
	<b>5306057</b>	F-3	Red Friction Ring
	<b>5322176</b>	VBF-5	Black Slip Joint Gasket
1-1/4"	<b>0307052/5307052</b>	G-21	Rigid Seat (rubber over brass)
	<b>5306056</b>	F-3	Red Friction Ring
	<b>5306115</b>	F-5	Black Slip Joint Gasket
1"	<b>5306055</b>	F-3	Red Friction Ring
	<b>5306113</b>	F-5	Black Slip Joint Gasket

## Sloan SOLIS® Concealed Flushometers

### TROUBLESHOOTING GUIDE

*NOTE: Upon detection of the user, the red indicator light flashes slowly for a period of eight seconds. When the user leaves the detection range, the indicator light flashes rapidly and the Sensor initiates the flush sequence. Then the indicator light stops flashing and the valve flushes. The valve will flush after a three-second delay.*

#### 1. Sensor flashes continuously only when user steps within range.

A. Unit in Start-Up mode; no problem. This feature is active for the first ten (10) minutes of operation.

#### 2. Valve does not flush; sensor does not picking up user.

A. Range too short; increase the range.

#### 3. Valve does not flush; sensor picking up opposite wall or surface, or only flushes when someone walks by. light flashes continuously for first 10 minutes even with no one in front of the sensor.

A. Range too long; shorten range.

#### 4. Valve does not flush even after adjustment.

A. Range Adjustment Potentiometer set at full "max" or full "min" setting. Re-adjust Potentiometer away from full "max" or "min" setting.

B. Batteries completely used up; replace batteries.

C. Problem with Electronic Sensor module; replace Electronic Sensor module.

#### 5. Unit flashes 4 quick times when user steps within range.

A. Batteries low; replace batteries.

#### 6. Valve does not shut off.

A. Bypass Orifice in Diaphragm is clogged with dirt or debris, or Bypass is clogged by an invisible gelatinous film due to "over-treated" water. Remove Flex Tube Diaphragm and wash under running water. Note: Size of Orifice in the Bypass is of utmost importance for the proper metering of water by the valve. DO NOT ENLARGE OR DAMAGE THIS ORIFICE. Replace Flex Tube Diaphragm if cleaning does not correct the problem.

B. Dirt or debris fouling Stem or Flex Tube Diaphragm. Remove Flex Tube Diaphragm and wash under running water.

C. O-ring on Stem of Flex Tube Diaphragm is damaged or worn. Replace O-ring if necessary.

D. Problem with Electronic Sensor Module; replace Sensor Module.

#### 7. Not enough water to fixture.

A. Wrong Flush Volume Regulator installed in Flex Tube Diaphragm Kit. Install the correct Regulator (see Step 4 of these instructions).

B. Wrong Sloan SOLIS® model installed; i.e., 1 gpf. urinal installed on 3.5 gal. Closet fixture. Replace with proper Sloan SOLIS® model.

C. Enlarged Bypass in Diaphragm. Replace Flex Tube Diaphragm.

D. Control Stop not adjusted properly. Readjust Control Stop.

E. Inadequate volume or pressure at supply. Increase water pressure or supply (flow) to valve. Consult factory for assistance.

#### 8. Too much water to fixture.

A. Wrong Flush Volume Regulator installed in Flex Tube Diaphragm Kit. Install the correct Regulator (see Step 4 of these instructions).

B. Control Stop not adjusted properly. Readjust Control Stop.

C. Wrong Sloan SOLIS® model installed; i.e., 3 gpf. model installed on 1.0 or 1.5 gal. urinal fixture. Replace with proper Sloan SOLIS® model.

D. Dirt in Diaphragm Bypass. Clean under running water or replace Flex Tube Diaphragm.

Note: The EBV-46-A Beam Deflector is not required or available for the Sloan SOLIS®.

### !!! IMPORTANT — CONTROL STOP SETTING !!!

**NEVER OPEN CONTROL STOP TO WHERE THE FLOW FROM THE VALVE EXCEEDS THE FLOW CAPABILITY OF THE FIXTURE. IN THE EVENT OF A VALVE FAILURE, THE FIXTURE MUST BE ABLE TO ACCOMMODATE A CONTINUOUS FLOW FROM THE VALVE.**

### CARE AND CLEANING INSTRUCTIONS

**DO NOT USE** abrasive or chemical cleaners to clean flushometers that may dull the luster and attack the chrome or special decorative finishes. Use **ONLY** mild soap and water, then wipe dry with a clean towel or cloth.

When cleaning the bathroom tile, protect the flushometer from any splattering of cleaner. Acids and cleaning fluids can discolor or remove chrome plating.

**When assistance is required, please contact Sloan Valve Company Installation Engineering Department at: 1-888-SLOAN-14 (1-888-756-2614).**