



# Sustainability & Sloan Commercial Restroom Products

# Presenters



Patrick Boyle  
Director, Corporate Sustainability  
Sloan Valve Company  
Franklin Park, IL



Andrew Warnes  
Manager – Technical Training  
Sloan Valve Company  
Franklin Park, IL

# Agenda

1. What does “sustainable” mean?
2. What are the benefits of a sustainable building?
3. How can Sloan products help?
4. What tools does Sloan provide?

We will not be covering:

- Sustainability outside of the context of commercial buildings
- ARC digital scoreboards
- BREEAM and Green Globes



# What are “Sustainable” and “Sustainability”?

Meeting the needs of today without sacrificing the needs of the future

# Cause and Effect



Minamata 1956



Silent Spring 1962



Cuyahoga River 1969



Oil Embargo 1973



Love Canal 1977



Clean Air Act 1963



US EPA 1970



Clean Water Act 1972



EPACT 1992



USGBC 1993

# Versions, Frameworks, & Levels

## 1998 LEED v1

Obsolete

## 2000 LEED v2

Obsolete

## 2009 LEED v3

Registered before October 31, 2016 and Completed before June 30, 2021

## 2013 LEED v4

Registered after October 31, 2016

## 2019 LEED 4.1

Beta for projects registered after January 19, 2019 for BD+C, ID+C and O+M frameworks only



**BD&C (110 points)**  
Building Design & Construction



**ID+C (110 points)**  
Interior Design & Construction



**O+M (100 points)**  
Building Operation & Maintenance



**Neighborhood Development**



**Homes**



**Certified**  
40-49 points



**Silver**  
50-59 points



**Gold**  
60 to 79 points

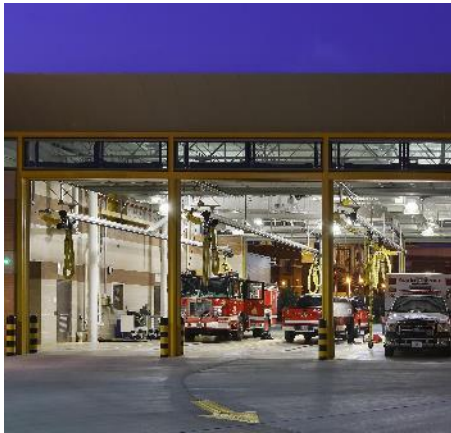


**Platinum**  
80 to 110 points

# Chicago Area LEED Certification Examples

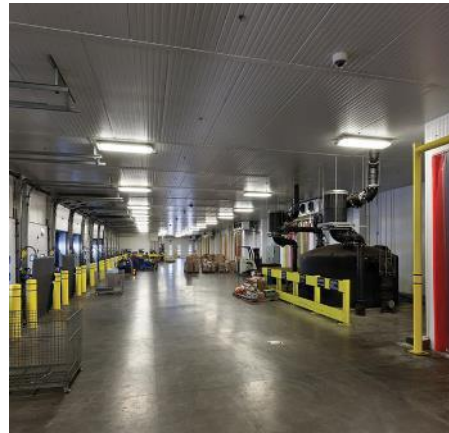
[Link to all LEED certified buildings worldwide](#)

- Project name and address
- Size
- Scorecard



**Chicago Fire Dept  
Engine 18**

LEED Version 2.1  
34 Points (Silver)  
Registered 4/30/2006  
Certified 8/3/2009



**Testa Produce**

LEED Version 2.2  
59 Points (Platinum)  
Registered 12/17/2007  
Certified 12/15/2011



**Franklin Park  
Police Dept**

LEED Version 2009  
64 Points (Gold)  
Registered 12/2/2011  
Certified 12/9/2013



**Rush University  
Medical Center Tower**

LEED Version 2.2  
40 Points (Gold)  
Registered 9/5/2006  
Certified 3/13/2012



**Willis Tower**

LEED Version 2009  
60 Points (Gold)  
Registered 4/23/2010  
Certified 10/22/2018

Recertified (Platinum)  
11/2019



**600 West Chicago**

LEED Version 4.1  
69 Points (Gold)  
Registered 2/6/2019  
Certified 4/28/2020

# What are the Benefits of a Sustainable Building?

- Higher occupancy
- More money per square foot
- Improved productivity
- Brand enhancement
- Decreased carbon footprint

*333 West Wacker Drive, Chicago, IL  
LEED 2009 , Existing Buildings Operations and Maintenance  
Certification Date and Level : September 20, 2016 - GOLD*



# The Difference between LEED & WELL

**LEED – How the building impacts the environment**



**WELL – How the building impacts the occupants**



# Sloan was Sustainable before Sustainability was a “Thing”



1906

William Elvis Sloan invents the modern flushometer – reducing average flush volumes by more than 50%



**Sloan manual diaphragm flushometer**

Installed: 1909  
Removed: 2015  
In operation: 106 years

Location: Girard College,  
Philadelphia, PA

# How do Sloan Products Support High Performance Buildings?



**Compliance**



**Water Conservation**

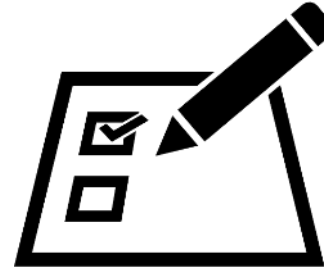


**Transparency**



**Carbon Offset**

# Compliance



Baseline (mandatory for new construction)	
Closets	1.28 gpf
Urinals Hybrid Waterfree	0.125 gpf
Faucets	0.5 gpm
Metering Faucets	0.2 gpc
Shower Heads	1.8 gpm + WaterSense

Baseline (aligned with CalGreen except for metering faucets)	
Closets	1.28 gpf
Urinals Hybrid Waterfree	0.125 gpf
Faucets	0.5 gpm
Metering Faucets	<b>0.25 gpc</b>
Shower Heads	1.8 gpm + WaterSense

Updated State Plumbing Codes	
Closets	1.28 gpf
Urinals	0.5 gpf
Georgia, New York, Nevada, Oregon, Texas, Washington	

Baseline	
Closets Tank	1.6 gpf max dual flush 1.28 gpf max single flush
Flushometer	1.28 gpf max 1.0 gpf min
Urinals	0.5 gpf max
Faucets Private Public	1.5 gpm <b>NA</b>
Shower Heads	2.0 gpm

# LEED v4 Credits for Water Conservation

Baseline	
Must reduce by 20% or more to achieve LEED certification and 25% or more to achieve LEED points	
Water Closet	1.6 gpf
Urinal	1.0 gpf
Faucet	0.5 gpm
Shower heads	2.5 gpm



BD+C Building Design and Construction		
Percent Reduction	Points (BD+C)	Points (Schools, Retail, Hospitality, Healthcare)
25%	1	1
30%	2	2
35%	3	3
40%	4	4
45%	5	5
50%	6	-

ID+C Interior Design Construction			
Percent Reduction	Points (Commercial Interiors)	Points (Retail)	Points (Hospitality)
25%	2	2	2
30%	4	4	4
35%	6	6	6
40%	8	8	8
45%	10	10	10
50%	12	-	11

O+M Building Operation and Maintenance		
Percent Reduction	Points (Except Data Centers)	Points (Data Centers)
10%	1	1
15%	2	2
20%	3	3
25%	4	4
30%	5	-

# LEED v4 Credits for Transparency



## LCA

Life Cycle Assessment



## EPD

Environmental Product Declaration



## HPD

Health Product Declaration

## How can Sloan products help meet the goals of a project?

- To achieve a LEED v4 Materials and Resources credit (EPD for BD+C), a project team must specify 20 different products that have an EPD, each of which are sourced from at least five different manufacturers.
- To achieve LEED v4 Materials and Resources credit—HPD for BD+C, a project team must permanently install at least 20 different products from five different manufacturers who have an HPD in compliance with the Health Product Declaration Open Standard.
- For EPD for ID+C, a project team must specify 10 different products sourced from at least three different manufacturers.
- For HPD for ID+C, your project team must install at least 10 different products from at least three different manufacturers.

[Sloan Transparency Reports](#)

# Carbon Offset



**“Cradle to Gate”**  
‘T Code’ Products –  
no charge forestation  
credits



**Cradle to Grave**  
On-demand



**2.5 trees for every 1 flushometer**

For every Sloan flushometer  
produced, Sloan plants 2.5  
trees to offset production

[Carbon Neutral Sell Sheet](#)

# What Tools does Sloan Provide?



[Sustainability Calculator](#)



[Green Product Finder](#)



[Compliance Filter](#)



[Product Rebate Finder](#)



# Sustainability Calculator

Enter your Sloan product

Type your material number (min 3 chars)

Only sustainable products are being used for the calculator, please check out our [products with lower gallons per flush/minute](#)

\_\_\_\_\_ Or \_\_\_\_\_

Product Type  
-- Select Type --

Product  
-- Select Product --

Water unit  
Gallons

Water usage  
-- Select Water Usage --

Add another product ⊕

Continue

[Sloan Sustainability Calculator](#)



Enter your project details

Flushometer SOLIS 8186, 0.125 gpf

Number of products  
50

Water and sewer costs in dollars (\$) per 1000 gallons/3785.41 Liters  
7  
National average is \$7

Days of occupancy per year  
260  
Average number of business days is 260

Number of occupants  
50

Daily uses per person  
3  
LEED Baseline is 3, excluding showerheads

ZIP code of project (for potential water cost savings and incentives)

Calculate

Proprietary and Confidential

## Results

SOLIS 8186, 0.125 gpf

Your building's water usage compared to the LEED baseline

	Your Building	LEED Baseline
Gallons per use	0.125	1.6
Uses per day	3	1
Water use (gallons/day)	938	12,000
Water use (gallons/year)	243,750	3,120,000

### Your annual product savings



### Product specifications

Flushometer SOLIS 8186, 0.125 gpf

Number of products	50
Product type	Flushometer
Product	SOLIS 8186
Days of occupancy per year	260
Number of occupants	50

Start a new calculation

# Green Product Finder


Search products...

Choose Product Type ▼

- Closet Combo
- Faucet
- Flushometer
- Hand Dryer
- Lavatory
- Showerhead
- Urinal
- Urinal Combo
- Water Closet

**ROYAL III**  
Royal® Exposed Manual Flushometer

[General Spec](#) [Where to buy](#)



Certifications and Credits

LEED	<input checked="" type="checkbox"/> Yes	Green Globes	<input checked="" type="checkbox"/> Yes
LEED V4 WE	<input checked="" type="checkbox"/> Yes	BREEAM	<input type="checkbox"/> No
LEED MR EPD	<input checked="" type="checkbox"/> Yes	WELL Building Standard	<input checked="" type="checkbox"/> Yes
LEED MR HPD	<input checked="" type="checkbox"/> Yes	CALGreen	<input checked="" type="checkbox"/> Yes
Living Building Challenge	<input checked="" type="checkbox"/> Yes	Carbon Neutral	<input checked="" type="checkbox"/> Yes

[Sloan Green Product Finder](#)

# Compliance Filter

The screenshot shows the Sloan website's product filter interface. At the top, there is a navigation bar with the Sloan logo and links for Design, Products, Resources, Company, and Sustainability. Below this is a breadcrumb trail: Home > Products > Browse Flushometers. A 'Reset All' button is visible. The main filter area is divided into two columns. The left column contains a list of filter categories: Fixture Type, Activation, Power, Flush Volume, Installation, Fixture Connection, Fixture Mount, Valve, Finish, Specialty, Product Line, and Compliances. The right column displays the selected product, the SOLIS 8111 Exposed Sensor Water Closet Flushometer, with a price of 'As low as \$669.90' and a 'Polished Chrome' finish. Below the product image are color selection swatches and another product image, the SOLIS RESS-U.

The screenshot shows the Sloan website's compliance filter panel. It is titled 'Compliances' and features a list of 20 checkboxes for various certification and compliance standards. The list includes: ADA Compliant, BAA Compliant, BREEAM Materials Credit, BREEAM Water Credit, Carbon Neutral, EPD, Green Globes Materials & Resources Credit, Green Globes Water Credit, HPD, LEED Materials & Resources EPD Credit, LEED Materials & Resources HPD Credit, LEED V4 Water Efficiency Credit, Satisfies LEED Credits, UL Certified, UPC Certified, WaterSense Listed, cUPC Certified, and cUPC Green Certified.

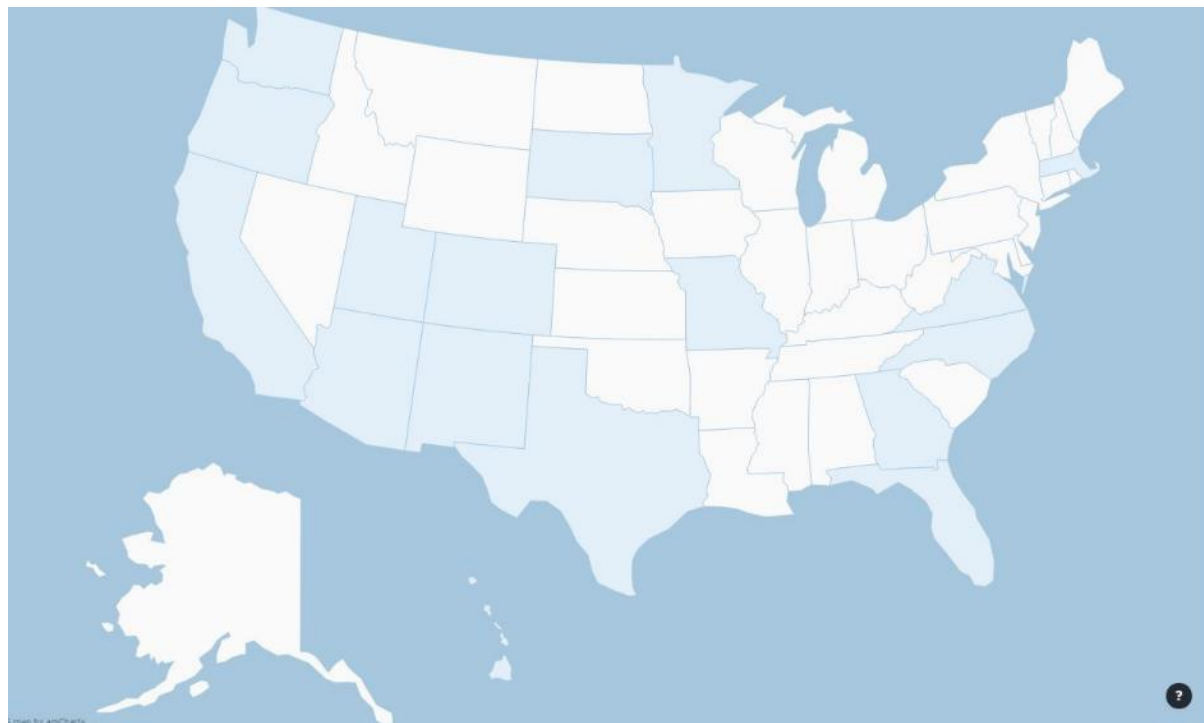
[Flushometer Compliance Filter](#)

[Faucet Compliance Filter](#)

[Sink Compliance Filter](#)

# Product Rebate Finder

## [Sloan Product Rebate Finder](#)

### **PAULDING COUNTY, GEORGIA**

\$50 for 1 HET - Residential only

770-222-6850 • [Website](#)

### **CITY OF GRIFFIN, GEORGIA**

\$100 for HET - Residential only

770-229-6424 • [Website](#)

### **COBB COUNTY GOVERNMENT, GEORGIA**

\$100 for HET - Residential only

770-419-6244 • [Website](#)

### **METROPOLITAN NORTH GEORGIA WATER PLANNING DISTRICT, GEORGIA**

\$100 for HET - Residential only

404-463-8645 • [Website](#)

# Sloan Sustainability Partners

Click on a logo to learn more



WaterSense

Partnering with the Environmental Protection Agency's WaterSense program to educate on the importance of water efficiency and to provide high-performing, water-efficient products that proudly carry the Watersense label.



USGBC

Partnering to help change the way buildings and communities are designed, built and operated for maximum efficiency and sustainability.



AWE

Advocating for water efficient products and programs, responsible legislation, and providing information and assistance on water conservation efforts.



IAPMO

Partnering to strengthen scientific research in all aspects of plumbing design and analysis and strengthening product testing and certification.



The Water Council

Partners in freshwater research, innovation, education and business development.



CUWCC

Partnering to integrate urban water conservation Best Management Practices into the planning and management of California's water resources.



ASPE

Partnering with the technical and scientific experts in plumbing design and engineering to foster comprehensive solutions and sustainable systems.



Alliance for Water Stewardship

We partner with the Alliance for Water Stewardship to promote the responsible use of freshwater that is socially and economically beneficial and environmentally sustainable.

# Summary

- Certification and registration of “high performance buildings” is becoming mainstream
- Sloan has been driving sustainable plumbing products since 1906
- Our mission is to give you the tools to find the best sustainable plumbing products for your projects
- Sloan offers more products with EPDs, HPDs, and WaterSense certifications than any other manufacturer in our industry
- Please contact your local Sloan Representative or Strategic Account Manager (SAM) to learn more



# Questions?

# Upcoming Sloan Training Webinars



Week of July 20<sup>th</sup>

Sloan Touch-free  
Solutions for 2-hole Sinks

*A pre-recorded on-demand  
webinar available for 24/7  
access*



July 30<sup>th</sup>

WELL Building Standard  
and Sloan Commercial  
Restroom Products



Find your local Sloan representative for more information

## Sloan Rep Locator tool

- Local code knowledge
- Familiarity with existing sites
- Product knowledge
- Available for onsite consultation

### **Sloan Customer Care Center**

Phone: 800.982.5839

Hours: 7:00 AM - 5:00 PM (CST) Monday – Friday

[customer.service@sloan.com](mailto:customer.service@sloan.com)

### **Sloan Technical Support**

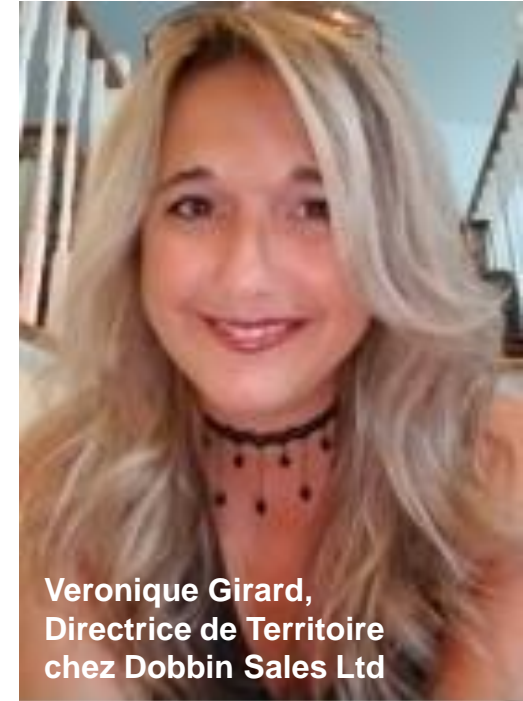
P: 888.756.2614

F: 800.737.3061

[techsupport@sloan.com](mailto:techsupport@sloan.com)



**Gabriel Martin,**  
Directeur de Territoire  
chez Dobbin Sales Ltd.



**Veronique Girard,**  
Directrice de Territoire  
chez Dobbin Sales Ltd



**Laval / Montreal, Quebec, Canada**

# Training Comments, Questions, or Suggestions?

Andrew Warnes  
Manager – Technical Training  
Sloan Valve Company  
10500 Seymour Avenue  
Franklin Park, IL USA 60131-1259

Office: +1-800-982-5839  
E-mail: [training@sloan.com](mailto:training@sloan.com)  
Web: [sloan.com](http://sloan.com)