

SMART SOLUTIONS

SUMMER 2020

Helping contractors save money and enhance productivity

Contractors, Suppliers Team Up with FEMA, Army Corps to Transform Chicago Convention Center into COVID-19 Field Hospital

As the coronavirus pandemic flared up around the country, the U.S. Army Corps of Engineers rapidly built alternative care facilities to alleviate strain on local hospitals—and MCAA member contractors and manufacturer/supplier partners were there to help. In Chicago, **Ferguson**, **Bradford White**, **Laars**, and **Sloan** all provided needed materials in record time, and **Helm Group** (formerly **Mechanical, Inc.**) was among those working on the ground nonstop as the HVAC and plumbing contractor for the job. Ferguson; LAARS, a Bradford White Company; and SLOAN are all benefactor sponsors.

While most of the Army Corps facilities were designed to handle non-COVID-19 patients, Chicago's McCormick Place convention center was planned to care for up to 3,000 people with mild or moderate coronavirus infection, freeing up hospital beds for more severe cases. Patients would be separated in the convention center halls by the level of care they required, spread throughout the facility's 2.6 million square feet of exhibit space. Construction for the first 500 beds was completed April 3. (As the pandemic spread, the project was scaled back to 1,000 beds, because the state lockdown "flattened the curve"—or slowed the pace of infection—and area hospitals were able to keep up with the cases.)

Plumbing Industry Responds

As construction got underway, a plumbing contractor reached out to Ferguson Enterprises for help sourcing 17 Bradford White, 120-gallon, 54 kW, 208-volt water heaters and five LAARS Heating Systems 200-gallon jacketed and insulated vertical storage tanks to generate and store sufficient hot water for the facility. The first treatment area, with 500 beds, needed water heaters and a storage tank for the staff showers and another heater for showers that met Americans with Disabilities Act standards—all within four days.

"We didn't know what to expect, when we got the call to help on the COVID-19 Care Center project at McCormick Place,"



With the cooperation of vendors like Ferguson, Bradford White, Laars, and Sloan, Helm Group (formerly Mechanical, Inc.) and others had the first 500 beds ready to go for COVID-19 patients in a Chicago field hospital set up in McCormick Place convention center.

said Jim Kuenn, director of commercial—Central Midwest, Ferguson Enterprises. "We got involved midday on March 31 and needed to turn around a huge amount of product in just a few days. We reviewed the mechanical schedule and specifications provided to us. It was a daunting task that most of our associates had not seen before. We said 'yes' because we wanted to not only help our customer but also the community during this time of need."

While the factory could not supply the heaters in the timeframe required, one of Bradford White's consigned inventory warehouses in Atlanta, GA, had a sufficient number in stock. The heaters were delivered within 17 hours of ordering. The plumbing contractor and sales representatives credit their long history and experience with Bradford White, along with a vast local and national distribution network, as crucial to overcoming the logistical challenges.

continued on page 6

WHAT'S INSIDE



Guy's Mechanical Saves Steps, Time with Viega.....	3
Ahern Boosts Productivity with MILWAUKEE TOOL	4
Sloan Delivers Solutions for First 'Post-COVID-19' Office	5
Holmberg Mechanical Saves Time with Help from Anvil.....	7
CNA Explains How to Avoid Negligent Entrustment	9
Shoemaker, Victaulic Make Light Work of Replacement.....	10



Sloan Products Deliver Hygienic Solutions for First 'Post-COVID-19' Office Building

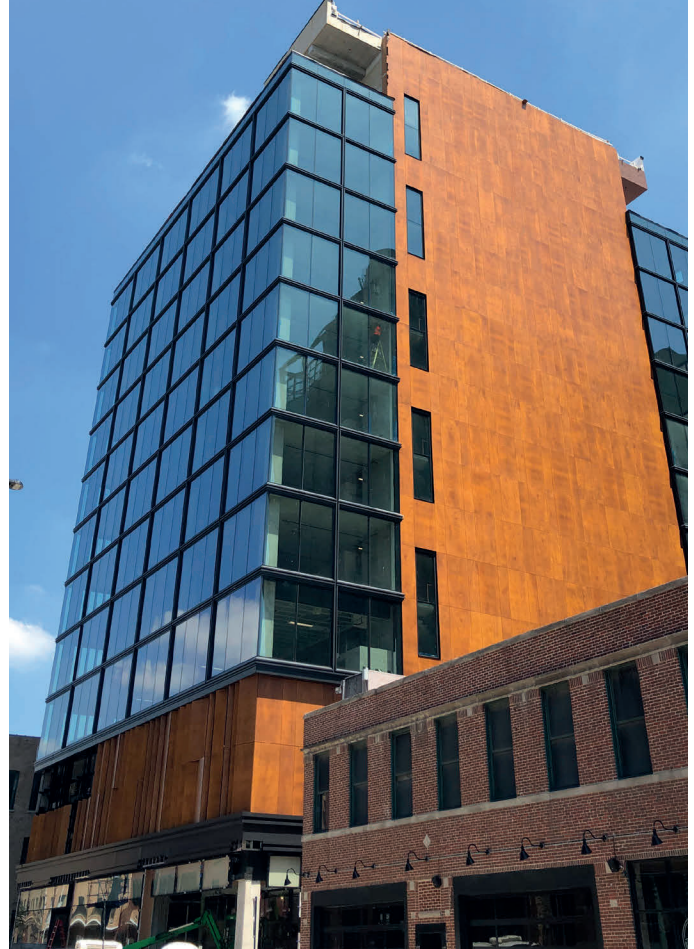
Thanks to Sloan's integrated lineup of touch-free commercial plumbing systems, Chicago's new Fulton East office and retail building is the nation's first office building designed specifically to address employee health, safety, and wellness in the post-COVID-19 environment.

The 90,000-square-foot building located in Chicago's Fulton Market District includes a number of leading-edge products. In addition to Sloan touch-free solar-powered faucets, soap dispensers, flushometers, and SloanTec® Hydrophobic Glaze for vitreous china fixtures, Fulton East is the world's first new construction building to be equipped with Mad Elevator Inc.'s Toe-To-Go hands-free elevator system. Fulton East is also the first multistory office building to employ airPHX, nonthermal plasma technology throughout the entire building to help reduce cross-contamination risks and provide employees with cleaner air and work surfaces.

"Sloan is proud to support the next generation of commercial buildings as our society makes personal wellness a top priority," said Jim Allen, Sloan co-president and CEO. "It is our responsibility to develop hygiene-friendly products that provide people with a sense of safety when they enter the restroom, and it was a privilege to be a part of this project in our backyard of Chicago."

The project specified Sloan's vitreous china Designer Urinal and wall-mounted water closet, each paired with a Sloan SOLIS® solar-powered and sensor-operated flushometer to deliver an energy-efficient and clean flush complemented by touch-free technology.

continued on page 8



Situated in a historic Chicago neighborhood, Fulton East is the nation's first office building designed specifically to address employee health, safety, and wellness in a post-COVID-19 business environment—thanks in part to Sloan's touch-free commercial plumbing systems.



Sloan's Designer Urinals and wall-mounted water closets provide Fulton East with an energy-efficient and touch-free solution.

SLOAN

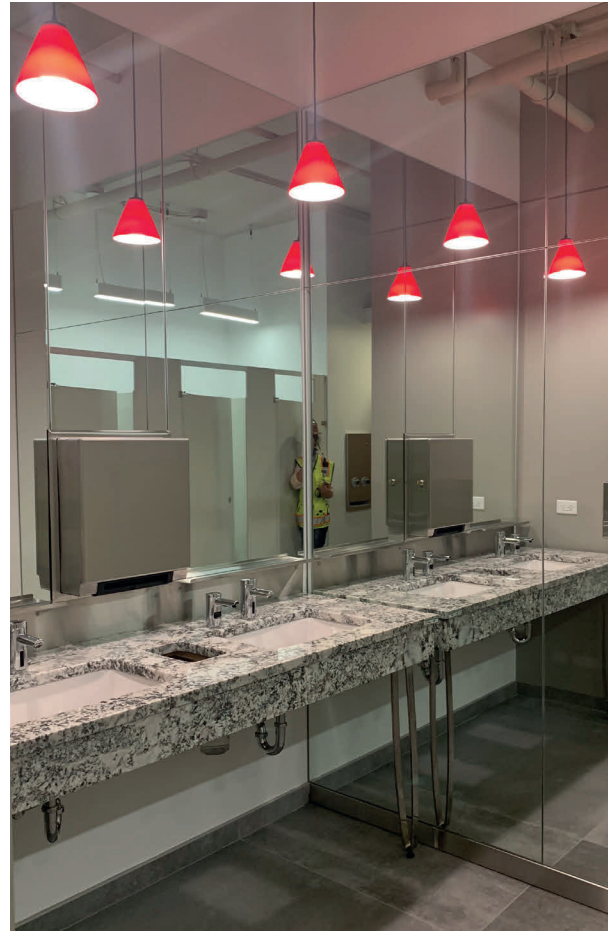
continued from page 5

Sloan's vitreous china undermount lavatory with Optima® solar-powered deck-mounted faucets and matching soap dispenser provide a hygienic handwashing solution. Each Sloan vitreous china fixture features SloanTec Hydrophobic Glaze, a proprietary water-repellant glaze that inhibits the growth of germs and bacteria to make the fixtures easier to clean. The building also includes a comprehensive set of other health, safety, and wellness enhancements, such as touch-free thermal scanning at the lobby security desk, continuous floor-to-ceiling low-E glass to provide the maximum amount of light into the building, and much more. All restrooms were constructed with one additional fixture than required by Chicago city code to help enhance social distancing measures.

“We have made a major investment of time and capital to bring Fulton East to market as a next-generation office building that prioritizes health, safety, and wellness for our tenants’ employees in a coordinated and comprehensive way,” said Bob Wislow, chairman and CEO of Parkside Realty, Inc., the developer of Fulton East. “We believe this is extremely important today, as employees and their families are deeply concerned about safety and well-being in the workplace environment.”

For more information on Sloan's work in delivering touch-free commercial restroom solutions, visit <http://www.sloan.com/company/news-press/hygiene-wellness>. MCAA thanks Sloan for being a benefactor sponsor.

Right: Sloan's touch-free faucets and matching soap dispensers provide a hygiene-friendly handwashing experience in the new Fulton East office building.



MILWAUKEE TOOL

continued from page 4

With MILWAUKEE's 5-year warranty and additional service support, Ahern mechanics no longer need to work on power tools, so they can focus on other work crucial to the business.

Frequently, MILWAUKEE TOOL's Research & Development and Engineering Teams have reached out to Ahern when they are looking for some real-life users to test new tools and provide feedback. This arrangement is a unique opportunity for field crews to get their hands on new-to-market tools and equipment, preview it far in advance of competitors, and provide feedback to help make the current tools and future releases even more effective. And with Ahern celebrating its 140th anniversary this year, MILWAUKEE TOOL gains insights from an organization that has withstood the test of time.

For more information, visit www.milwaukeetool.com. MCAA thanks MILWAUKEE TOOL for being a benefactor sponsor.



Jamie Brenner, Ahern plumber foreman, uses MILWAUKEE TOOL's M18™ FORCE LOGIC™ Press Tool on a copper pipe. The cordless, handheld tool makes installation easier and safer.